



RICE

# University Committee on the Library Update!

October 17, 2018  
Fred Oswald  
Faculty Chair



# RICE

# Committee Members

NAME	SCHOOL/DEPT	NAME	SCHOOL/DEPT
<b>Fred Oswald</b> , <i>Chair</i>	Department of Psychology	<b>Christopher Sperandio</b>	Department of Visual and Dramatic Arts
<b>Melissa Bailar</b>	Humanities Research Center	<b>Matthew Wettergreen</b>	Oshman Engineering Design Kitchen
<b>Barry Dunning</b>	Department of Physics and Astronomys	<b>George Zodrow</b>	Department of Economics
<b>Elizabeth Festa</b>	Center for Written, Oral, and Visual Communication	<b>Kate Hallaway</b>	Alumni representative
<b>Reto Geiser</b>	School of Architecture	<b>Mary Lowery</b> , <i>non-voting liaison</i>	Friends of Fondren Executive Director
<b>Paul Hand</b>	Department of Computational and Applied Mathematics	<b>Sara Lowman</b> , <i>non-voting liaison</i>	Vice Provost and University Librarian
<b>Patrick Hartigan</b>	Department of Physics and Astronomy	<b>Phyllis McBride</b>	Director, Proposal Development, Office of Research
<b>Haiyang Li</b>	Jones School of Business	<b>Marie Lynn Miranda</b> , <i>non-voting liaison</i>	Provost
<b>Peter Loewen</b>	Shepherd School of Music	<b>Anita Norwig</b> , <i>non-voting liaison</i>	Assistant Dean, School of Humanities
<b>Michael Maas</b>	Department of History	<b>Angela Thompson</b>	Senior Survey Admin, Office of Institutional Effectiveness
<b>Ronen Mukamel</b>	Department of Mathematics	<b>Isabel Kilroy</b>	Undergraduate representative
<b>Satish Nagarajaiah</b>	Department of Civil and Environmental Engineering	<b>Sapna Chhabra</b>	Graduate student representative
<b>William Parsons</b>	Department of Religion		
<b>Meredith Skura</b>	Department of English		



- (a) **Advise the University Librarian, the President, and the Provost** on matters related to general policy regarding the university library. In addition, the Committee **acts as a sounding board** for proposed major changes and new services, and serves as **a communication link between the library and the university community**.
- (b) Review and make recommendations with regard to policies and objectives of the university for the proper use of library resources by faculty, students, and staff; the enhancement of the faculty and student academic environment through effective use and support of the library; appropriate library support for research; and the enhancement of library resources and staff.
- (c) Prepare a brief, written report on the activities of the committee at the end of each academic year, and submit copies of this report to the president of the university, the provost, and the Faculty Senate.

1. Central Quad 4.0
2. Open Scholarship
3. Strategic Planning and Alignment with the V2C2



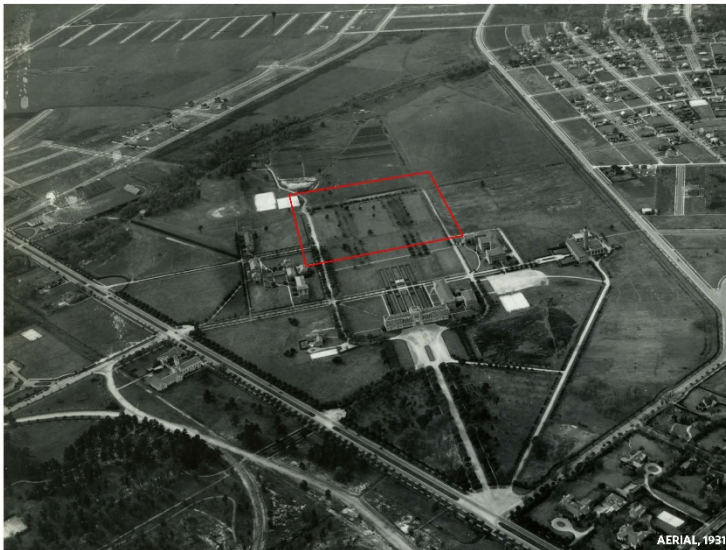
*“We must provide the spaces and facilities that will cultivate greater dynamism and vibrancy on the campus and foster our sense of community.”*

“As a first step toward achieving these aims, we propose a new vision for the **Central Quadrangle**—the space bound by Fondren Library, the Rice Memorial Center, and Herring Hall—that will transform it into the social center of the campus. This process will involve building a **cafe pavilion** on the back of Fondren, a **renovated student center** with a substantial and attractive dining facility, and **landscaped outdoor spaces** to invite a greater concentration of energy and interaction.”



# RICE

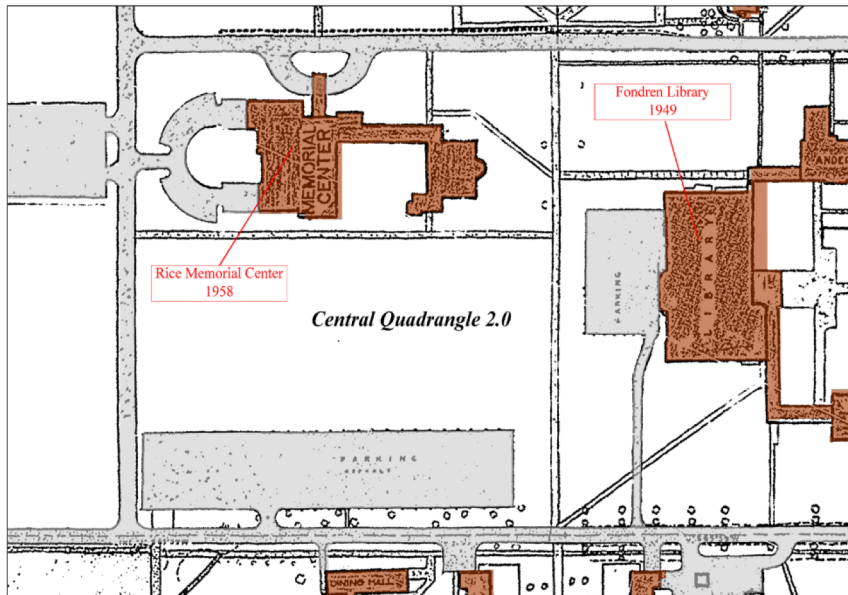
## Central Quad 1.0





# RICE

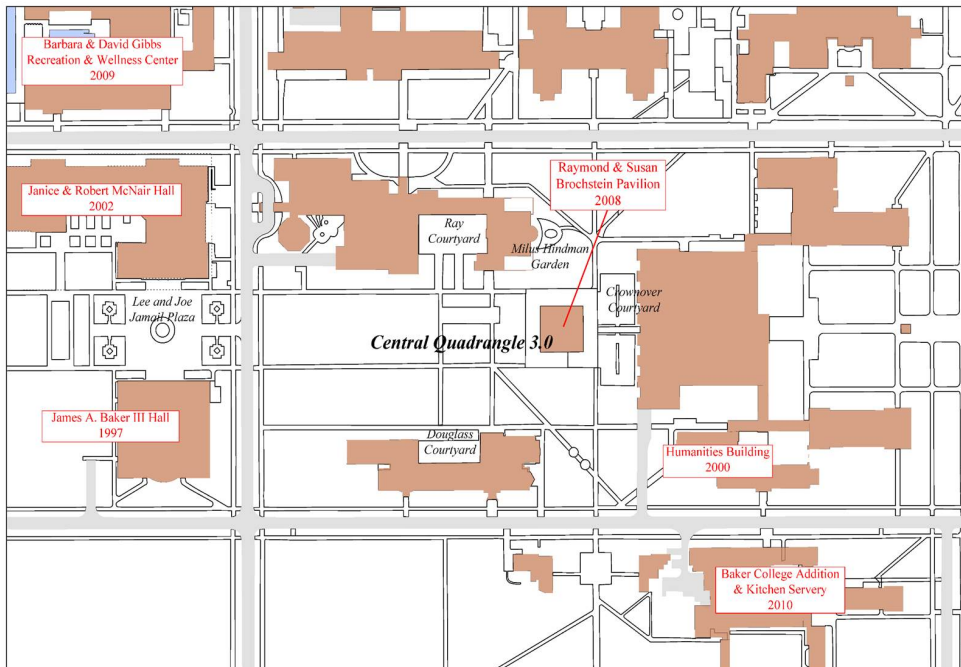
## Central Quad 2.0



1. Central Quad 4.0



## Central Quad 3.0: Brochstein Pavilion and Gibbs Recreation Center



**Fulfilling the Promise:** How can we achieve the vision of a true Central Quad that meets the needs of the next generation of students and faculty?

- Reconceive and renovate **Fondren Library** as the intellectual center of the university
- Reconceive and renovate the **student center**, reorienting it toward Central Quad and making it a crossroads for all students
- Create an **Innovative Education Tower** to the west of Herring Hall

## Central Quad 4.0:

### Two Guiding Questions

- What does the library of the 21<sup>st</sup> Century look like?
- What additional spaces do we need on campus to serve the needs of students and faculty for the next 15-20 years?

## Key Services in Renovated and Reconceived Libraries

- **Research Commons:** Support scholarly enterprise in today's collaborative and digital environment
- **Digital, Media, and Data Visualization Resources**
- **Teaching & Learning Kitchens:** Support knowledge creation activities and integrated support for learning
- **Expertise & Instruction** in digital and information fluency for students and faculty
- **IT services**



RICE

Central Quad + **Intellectual Quad**:  
Supporting Open Access,  
Open Education, & Open Data



# Forms of Openness



Open Access



Open Education



Open Data

<https://sparcopen.org/>



# RICE



0:05 / 8:23



Open Access Explained!

<https://www.youtube.com/watch?v=L5rVH1KGBCY>

2. Open Scholarship



RICE

# Advantages of openness

## 1. Promotes the university mission

- “Unsurpassed teaching”
- “Betterment of our world”
- Creation and dissemination of knowledge



<https://moody.rice.edu/art/jaume-plensa>

2. Open Scholarship

## 2. Offers important publishing alternatives

Researchers write articles (often about government-funded research).

Academics (often funded by universities) review & edit publications.

Publishers perform services such as layout & distribution.

Libraries pay: Journal inflation outpaces the CPI by 4-5x; some publishers claim big profit margins (~30%)

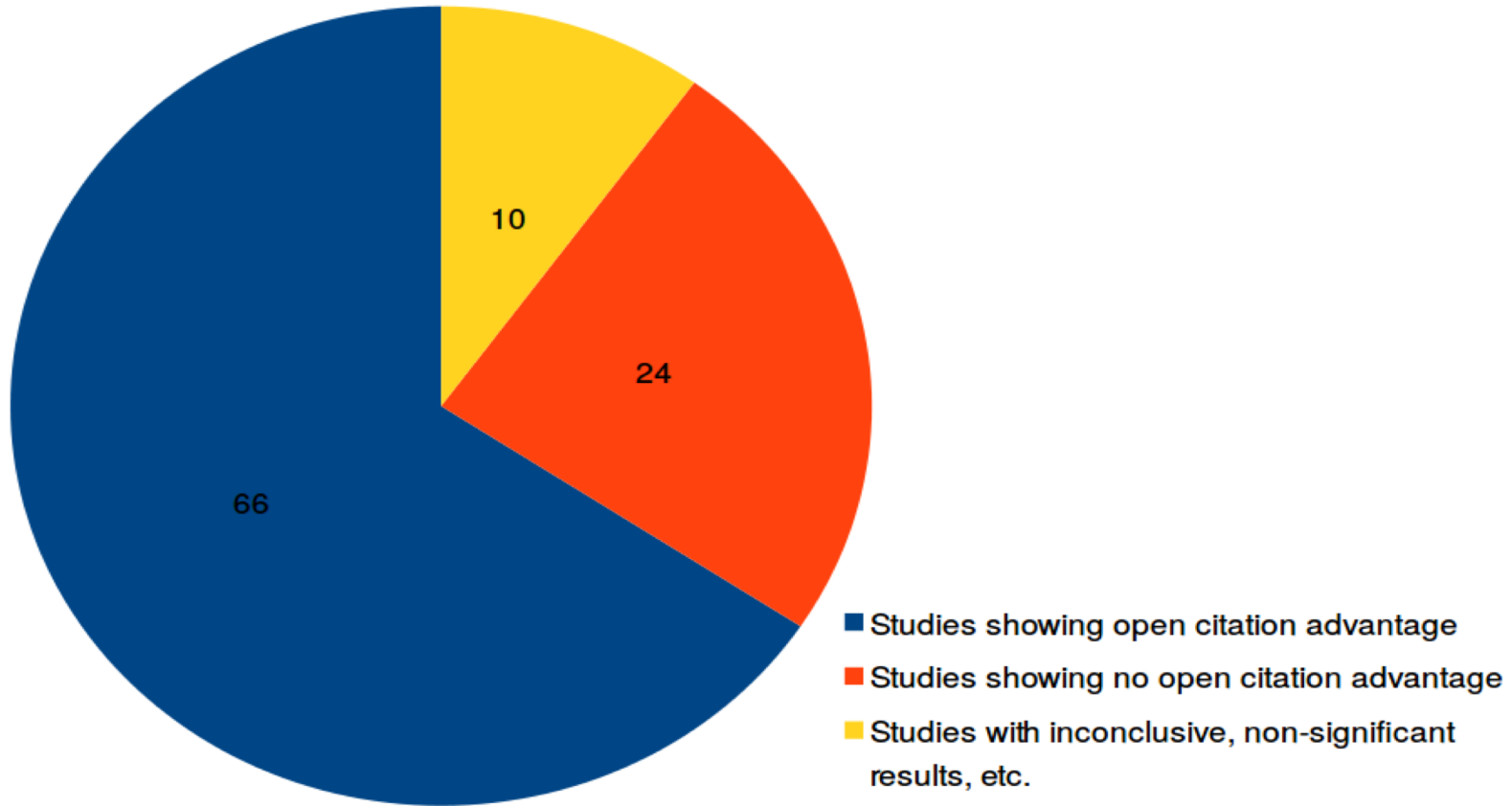
Many libraries must cancel journals or cut book buying to afford journal prices

To access research, you need to be a well-funded institution with subscriptions.

>> We need to experiment with new publishing models that provide greater access to research.



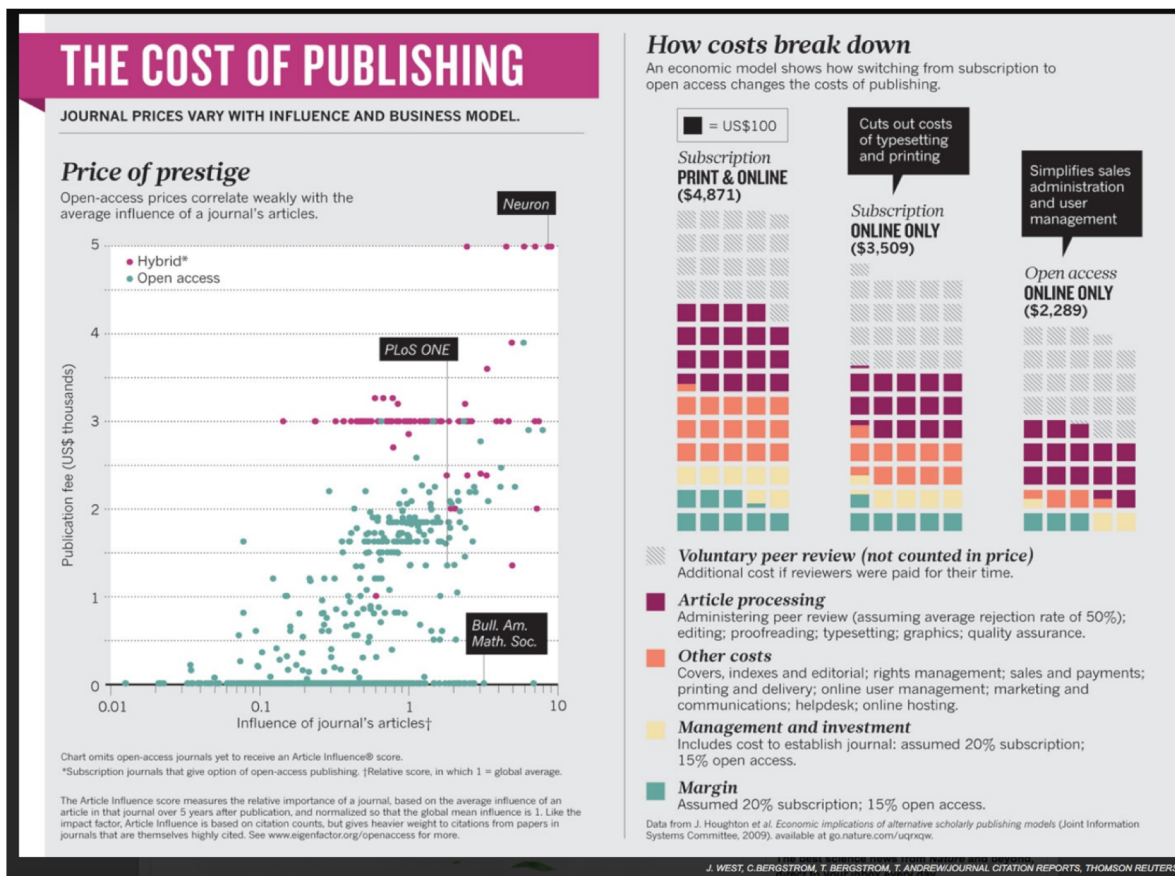
## 3. Raises the visibility and impact of scholarship



Data from [The Open Access Citation Advantage Service](#), SPARC Europe. Accessed October, 2015. [Figure](#) produced by E.C. McKiernan (CC BY).



## 1. Addressing economic models



<http://www.nature.com/news/open-access-the-true-cost-of-science-publishing-1.12676>

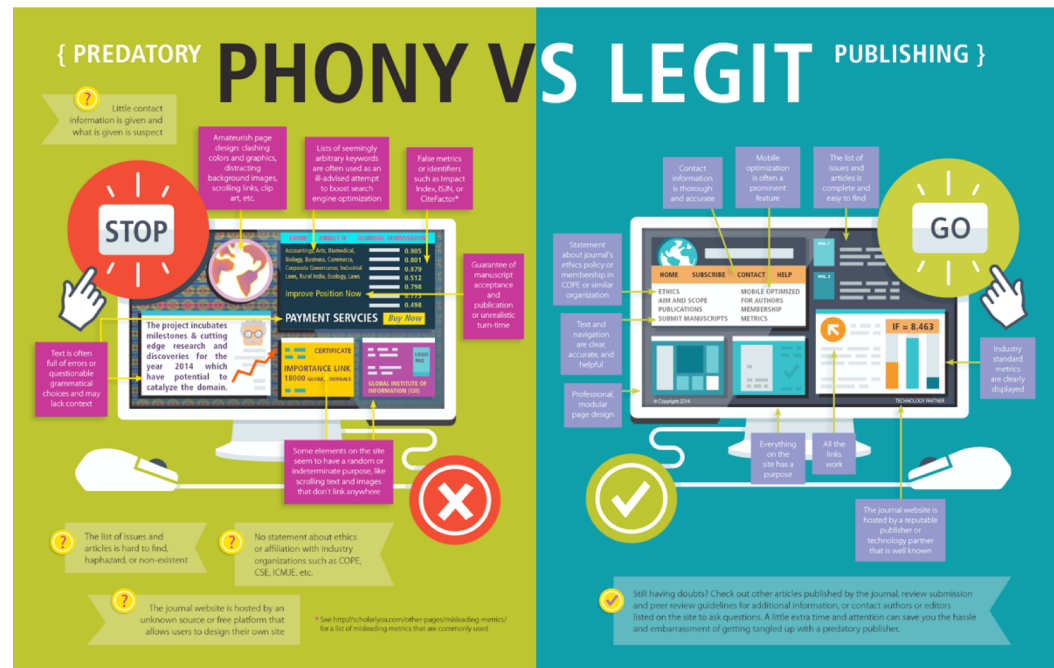
## 2. Open Scholarship





## 2. Addressing Quality Concerns

- Predatory journals
- Poorly-produced course materials

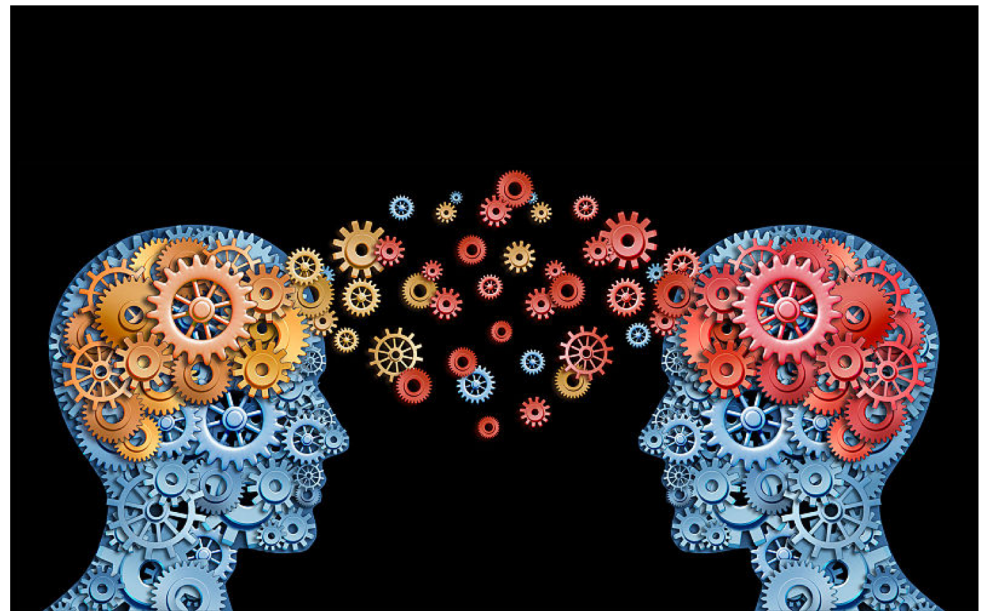


Evaluating Scholarly Journals infographic from FrontMatter by Allen Press / CC BY ND NC 3.0

## 3. Addressing disincentives of sharing

Barriers include:

- Professional pressures to publish in top journals
- Hassle of uploading research or sharing course materials



<https://commons.wikimedia.org/wiki/File:Knowledge-sharing.jpg>



# New open access developments at Rice:

- Journal Collection 2017
  - Support OA for 21 journals for 3 years
  - No article fees for authors
  - With shared fees, cost of an average title cut almost in half
- Publisher OA Collections
  - Language Science Press
  - Bertelsmann Verlag
  - transcript

# Rice: An Open Educational Resources (OER) LEADER



openstax™

<https://openstax.org/>



# RICE

# BENEFITS OF OER

- Helps students save money on textbooks
- Equity of access to education
- Increase student achievement
- Build connections between students and course materials
- Encourage new pedagogical and reflective practices
- Make up-to-the minute changes in course materials
- Alignment with Rice strategic plan



1. Assist undergraduate and graduate students in becoming adept researchers and effective communicators
2. Deepen the impact and visibility of Rice research
3. Enable researchers to find, access, use and share rich collections of research materials
4. Create dynamic spaces that foster learning, collaboration and knowledge creation
5. Engage with Houston and the world
6. Promote diversity, access and inclusiveness



- Work with the library staff on an action plan in support of their Strategic Plan
- Open Science—discuss ways that the library can facilitate campus discussions around Open Science initiatives
- New Library Management Platform---assist with end user implementation decisions



**Thank you!**

(and reach out, Fred Oswald – [foswald@rice.edu](mailto:foswald@rice.edu))